



# MONTHLY MEMBERSHIP PROGRESS REPORT

District 25 G

Results as of: 5/31/2015

GMT: THOMAS MATNEY

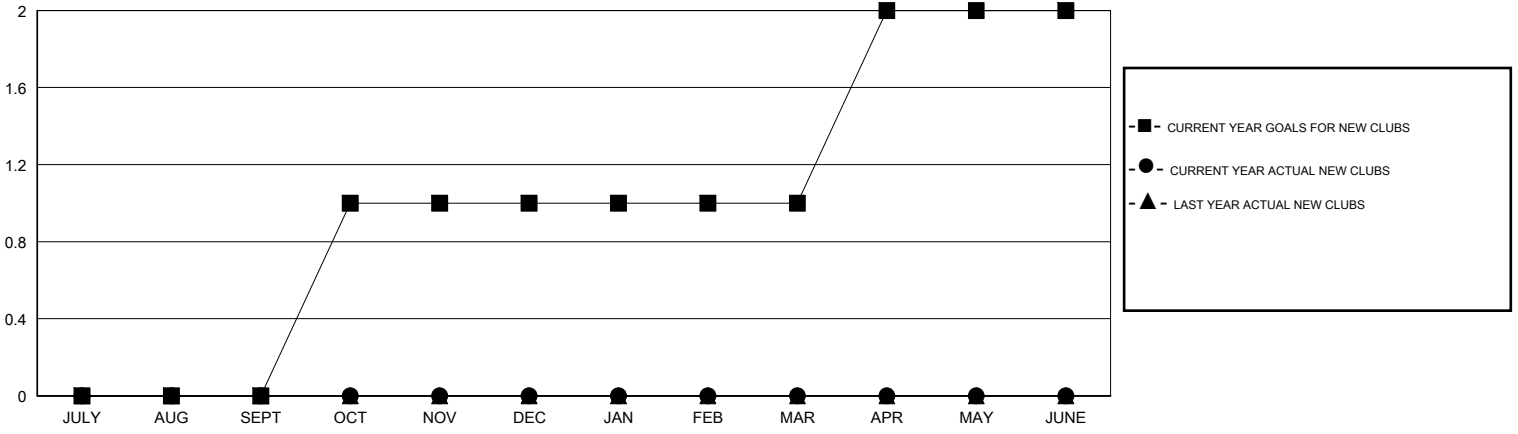
LOCATION INDIANA

GMT CA 1

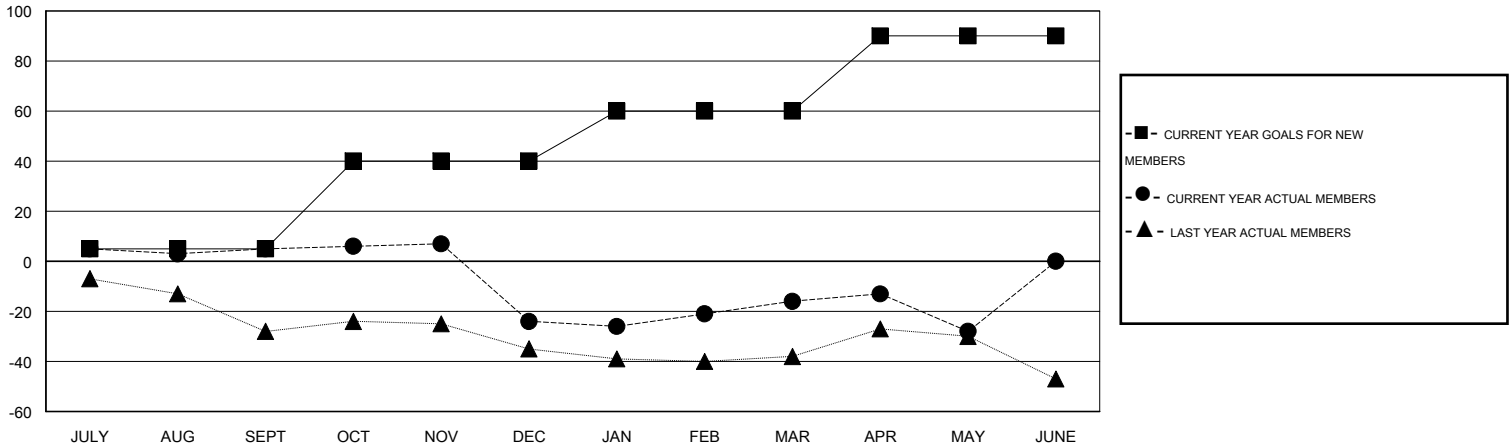
| Clubs                 |               |           |               |               |
|-----------------------|---------------|-----------|---------------|---------------|
| RESULTS FOR 2014-2015 |               |           |               |               |
| QUARTER               | NEW CLUB GOAL | NEW CLUBS | DROPPED CLUBS | NET GAIN/LOSS |
| JULY/AUG/SEPT         | 0             | 0         | 0             | 0             |
| OCT/NOV/DEC           | 1             | 0         | 1             | -1            |
| JAN/FEB/MAR           | 0             | 0         | 1             | -1            |
| APR/MAY/JUNE          | 1             | 0         | 0             | 0             |

| Members               |                 |                               |                 |               |
|-----------------------|-----------------|-------------------------------|-----------------|---------------|
| RESULTS FOR 2014-2015 |                 |                               |                 |               |
| QUARTER               | NEW MEMBER GOAL | CHARTER AND NEW MEMBERS ADDED | DROPPED MEMBERS | NET GAIN/LOSS |
| JULY/AUG/SEPT         | 5               | 35                            | 30              | 5             |
| OCT/NOV/DEC           | 35              | 29                            | 58              | -29           |
| JAN/FEB/MAR           | 20              | 24                            | 16              | 8             |
| APR/MAY/JUNE          | 30              | 12                            | 24              | -12           |

GOALS AND ACTUAL NEW CLUBS CUMULATIVE



GOALS AND ACTUAL MEMBERS CUMULATIVE



|                  |  |
|------------------|--|
| DROPPED CLUBS: 2 |  |
|------------------|--|

34 CLUBS OF 54 ADDED 1 OR MORE NEW MEMBERS

| GENDER DISTRIBUTION |                |
|---------------------|----------------|
| MALE                | 1,153 (75.02%) |
| FEMALE              | 384 (24.98%)   |

| DROPPED MEMBERS |            |
|-----------------|------------|
| DECEASED        | 21         |
| CLUB CANCELLED  | 5          |
| OTHER           | 102        |
| <b>TOTAL</b>    | <b>128</b> |

[CLICK HERE FOR HEALTH ASSESSMENT DATA](#)

|                       |     |
|-----------------------|-----|
| FAMILY UNIT MEMBERS   | 314 |
| HEAD OF HOUSEHOLD     | 154 |
| NON-HEAD OF HOUSEHOLD | 160 |